



# Grade 5

## Multiplication Word Problems

For the answer key, go to:  
[blog.sparkedu.com](http://blog.sparkedu.com)



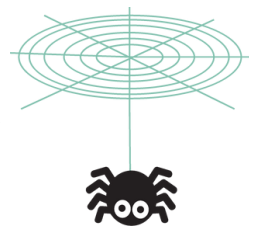
- 1 There are 2 spooky aquariums in the Ghoul-ish Ocean Park. The rectangular aquarium is 43 cm deep, 64 cm long and 58 cm wide. The square aquarium is 55 cm on all sides. Which aquarium holds more water?
- 2 The Ghostly Grill restaurant has seating for 165 people. It offers a \$75 Halloween buffet. If the restaurant is full and the buffet is ordered by everyone, how much money will the restaurant earn?
- 3 The House of Horror cinema has an average weekly attendance of 24 356 people. The average ticket sales are \$8 per ticket. What is the total income in a 13-week quarterly period?
- 4 It takes 1 hour less than 3 days for Wingnut Casey to fly around the Earth. How many hours will it take for him to go around the Earth 23 988 times? Calculate how many weeks this will be. Estimate your answer to the nearest year.





**Write your answers in proper fractions in their simplest form.**

- 5 In the Monster Manor,  $\frac{5}{6}$  of the creatures have fur. Of these furry creatures,  $\frac{4}{9}$  are werewolves. (a) What fraction of all the creatures are werewolves? (b) If there are 135 creatures altogether, how many werewolves are there?
- 6 The distance between the library and school is  $1\frac{1}{5}$  km. Yesterday the bike had a problem and Benny only rode his bike  $\frac{7}{8}$  of the way from school to the library and walked the rest of the way. How far did he ride his bike?
- 7 A spooky spiderweb is 12.02 centimeters wide. If 13 spiderwebs are strung across a wall, what is the total width of the spiderwebs?
- 8 A group of mad scientists from the Frankenstein Club visited a haunted museum. The admission fee was \$7.25 per scientist. If 90 scientists went to the museum, how much would the total cost be?



Scan for a FREE  
math test & report



**Success Beyond Just Math**

Nurture problem-solving and critical thinking skills for lifelong success.