



Primary 5 Singapore National Day Worksheet

For the answer key, go to blog.sparkedu.com/singapore-national-day-worsheets.sg

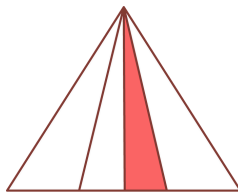


- 1 There are 24 red balloons and 56 white balloons. What is the ratio of the number of white to red balloons?

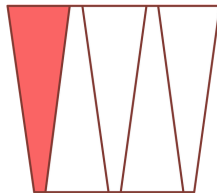
- (1) 3:7
- (2) 7:3
- (3) 3:10
- (4) 7:10



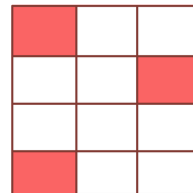
- 2 Which of the following shows $\frac{1}{4}$ of the figure shaded?



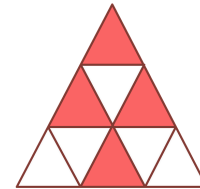
(1)



(2)

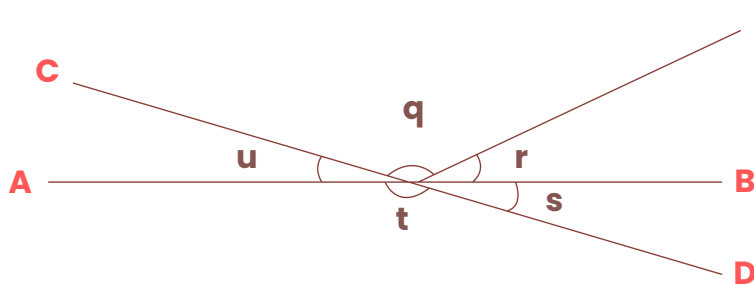


(3)



(4)

- 3 In the figure below, AB and CD are straight lines.

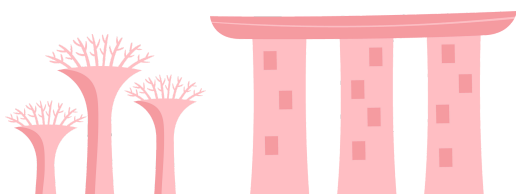


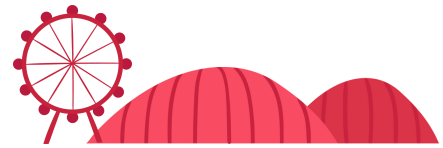
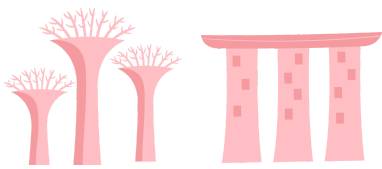
Which of the following is true?

- (1) $\angle r = \angle u$
- (2) $\angle q + \angle r = 180^\circ$
- (3) $\angle q + \angle r + \angle s = 180^\circ$
- (4) $\angle q + \angle r + \angle s + \angle t = 180^\circ$

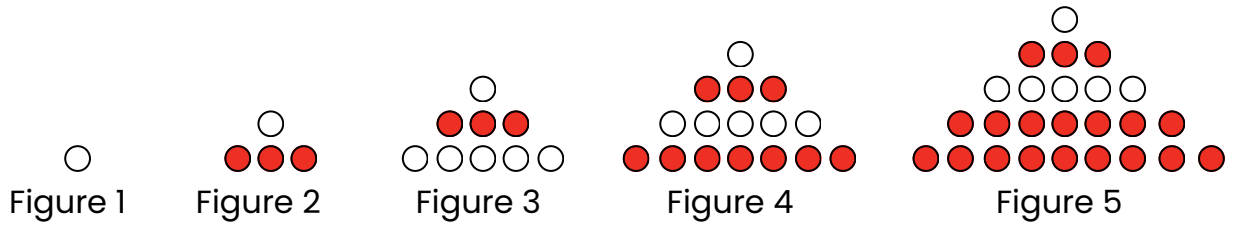
- 4 Printer A prints at a rate of 80 copies in 1 minute while Printer B prints at rate of 300 copies in 5 minutes.

- (a) Which printer prints at a faster rate?
- (b) By how many more copies does the faster printer print in one minute?





5 The first five figures of a pattern are shown below.



The table below shows the number of white and red circles used for each figure.

Figure Number	1	2	3	4	5	6
Number of white circles	1	1	6	6	15	
Number of red circles	0	3	3	10	10	
Number of white and red circles	1	4	9	16	25	

- (a) Fill in the table for Figure 6
- (b) What is the total number of white and red circles in Figure 50?

6 The brochure below shows the details of a sale in Star Mall.

- (a) Benny bought 2 of the same tablets during a sale in Star Mall. The usual price of the tablet was \$450. Find the amount of discount he received for both tablets.
- (b) Abby bought a smart watch at the sale. The usual price of the smart watch was 40% of the usual price of the tablet. What was the discounted price of the smart watch?

