




Primary 3

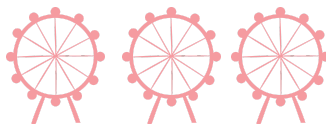
Singapore National Day Worksheet

For the answer key, go to
blog.sparkedu.com/singapore-national-day-worsheets.sg



1 Study the sums below.


$$= 6$$


$$= 36$$

Find the value of  x 

(1) 12

(2) 48

(3) 96

(4) 36

2 Find the product of 201 and 6.

(1) $100 + 2000 + 6$

(2) $100 + 200 + 6$

(3) $1000 + 20 + 6$

(4) $1000 + 200 + 6$

3 Which one of the following sums gives the greatest value?

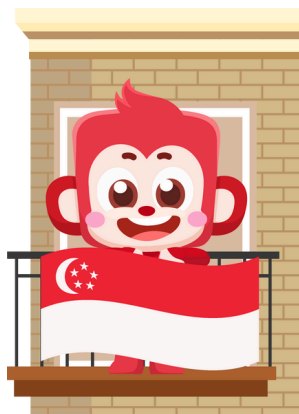
(1) $531 \div 9$

(2) $732 + 832$

(3) $3600 - 1600$

(4) 200×6

4

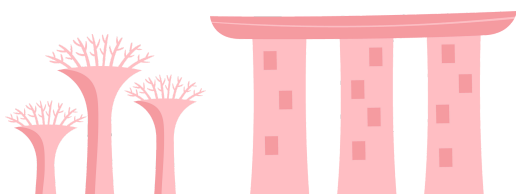


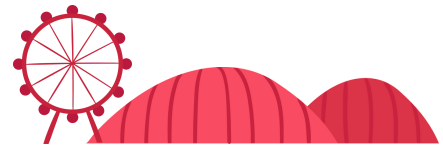
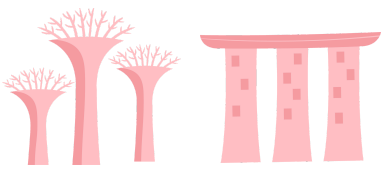
Benny is hanging a national flag to celebrate National Day.

The length of the flag is 90 cm.

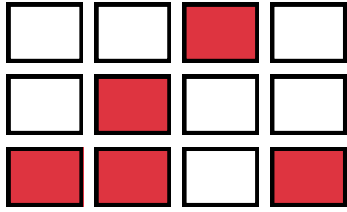
Its breadth is 135 cm.

What is the perimeter of the flag?



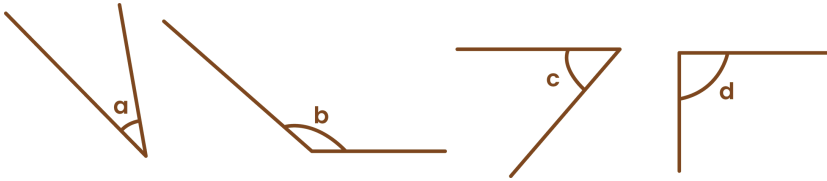


5 What fraction of the figure below is shaded?



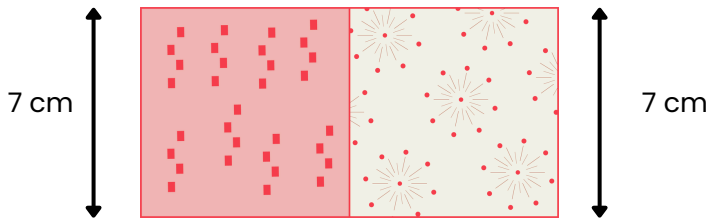
6 Which of these angles are smaller than a right angle?

- (1) $\angle a$ and $\angle b$ (2) $\angle a$ and $\angle c$
(3) $\angle a$ and $\angle d$ (4) $\angle b$ and $\angle d$



7 The rectangle below is made up of two identical squares.

- (a) What is the length of the rectangle?
(b) What is the area of the rectangle?



8 Figure A is made up of four identical rectangles. The breadth of one rectangle is 3 cm and its length is 3 times of its breadth. Find the perimeter of Figure A.

