



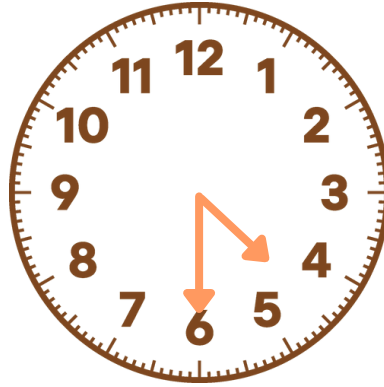
# Primary 2

## Singapore National Day Worksheet

For the answer key, go to [blog.sparkedu.com/singapore-national-day-worsheets.sg](http://blog.sparkedu.com/singapore-national-day-worsheets.sg)



- 1 Benny went with his family for the National Day Parade at The Padang. Benny left home at the time shown below. He took half an hour to get there. What time did he arrive?



- (A) 4:45      (B) 5:00      (C) 5:15      (D) 5:30

- 2 Draw hands on the clock faces and write the end time.

### Start Time

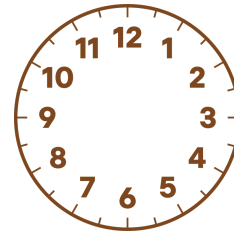
5:20 PM



### Time It Takes

The pre-parade show is 1 hour long.

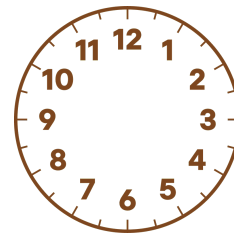
### End Time



6:25 PM



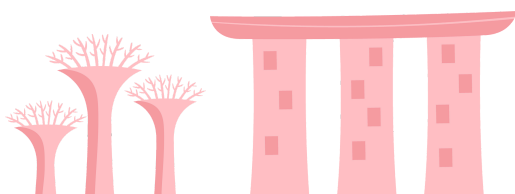
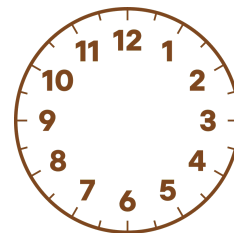
The Parade & Ceremony is 50 minutes long.

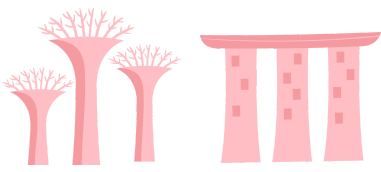


8:02 PM

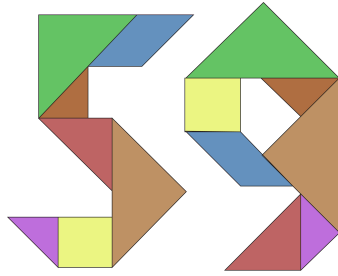


The firework display is 28 minutes long.



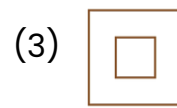


3 Which shape is **not found** in the set below?

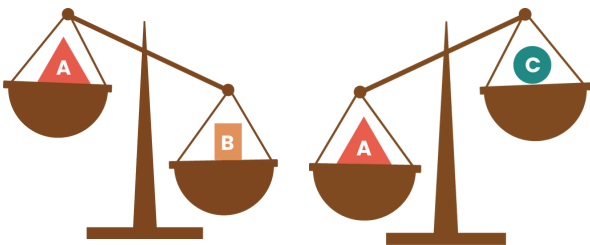


- (A) Square
- (B) Parallelogram
- (C) Rectangle
- (D) Triangle

4 Choose the shape below to complete the patten.

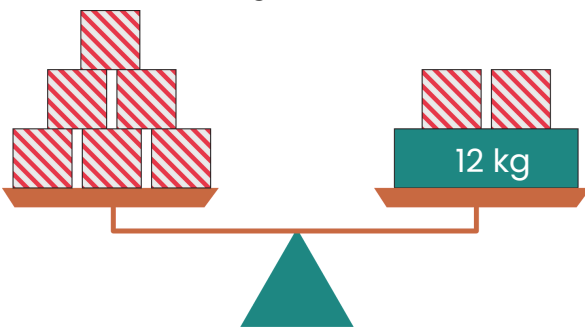


5 Study the diagrams carefully. Arrange the mass of the objects from the heaviest to the lightest.



Heaviest
Lightest

6 Look at the diagrams below carefully.



The mass of is  g.

